

GBC AUSTRALIA

Docuseal 3100

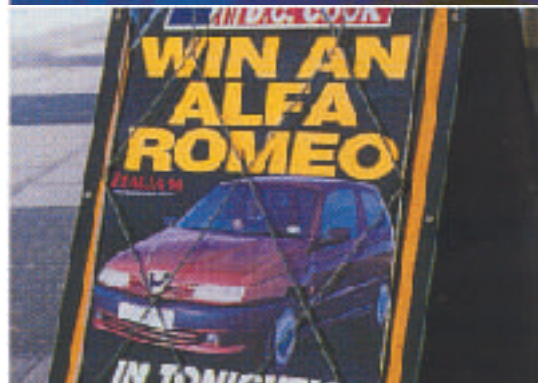
Roll Laminator

**Ideal for laminating
Posters, Drawings, Charts,
Graphs, Educational
Resource Material, Plans,
Pamphlets, Signs,
Catalogues and Manuals**

**Built with Safety
features**



Docuseal 3100



Features:

- * Simple operation.
- * Top and bottom Heat shoe opening for easy roller cleaning.
- * Cut off Trimmer at the back.
- * Easy replacement of films using preslotted film shaft with collars.
- * Reverse functions.
- * Silicon Rollers for easy clean up and durability.
- * Heavy duty Steel Gears.
- * **Safety features** -
 1. Safety shield.
 2. Feed tray with a latch to activate interlock safety switch.
 3. Film tension controls not protruding out.
 4. Auto shut off after two hours of laminating inactivity.

Specifications

Max. Laminating Width:	800mm
Max. Laminating Thickness:	3mm
Laminating speed:	0.8 to 3000mm/min. Variable
Power Consumption:	1700W
Operating Temperature:	0 - 120°C
Driving Motor:	DC geared motor
Temperature control:	Thermocouple & time ratio control
Heating System:	Hot shoe type with Infrared heater
Display:	FND & LCD display

*Specifications are subject to change without notification